



---

## The UAE Export Control

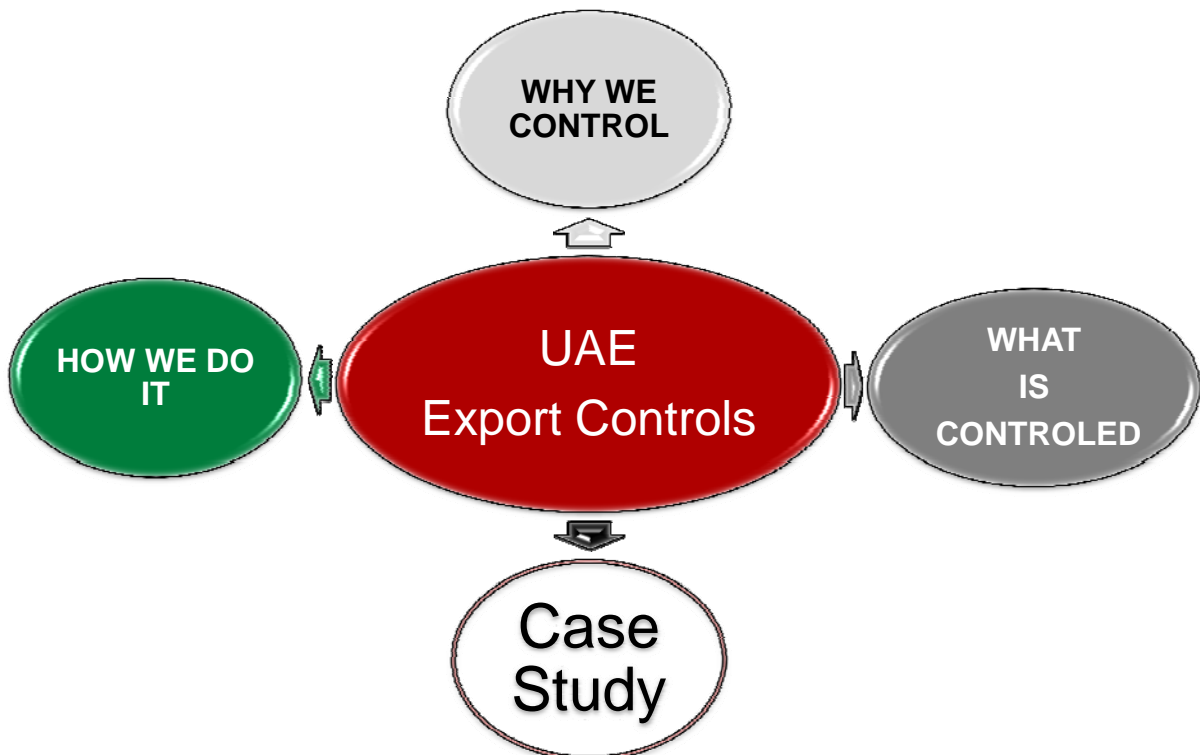
Executive office

---

The 23<sup>rd</sup> Asian Export Control Seminar, 23 – 25 Feb 2016, Tokyo, Japan



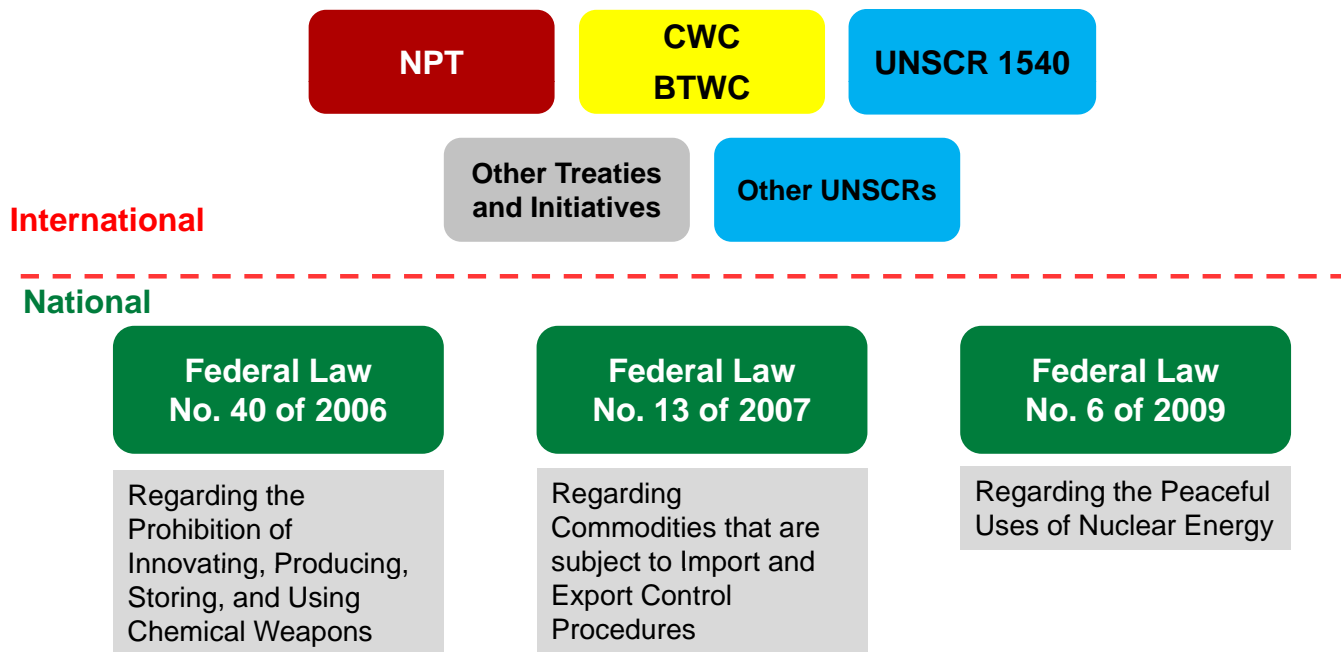
## Overview





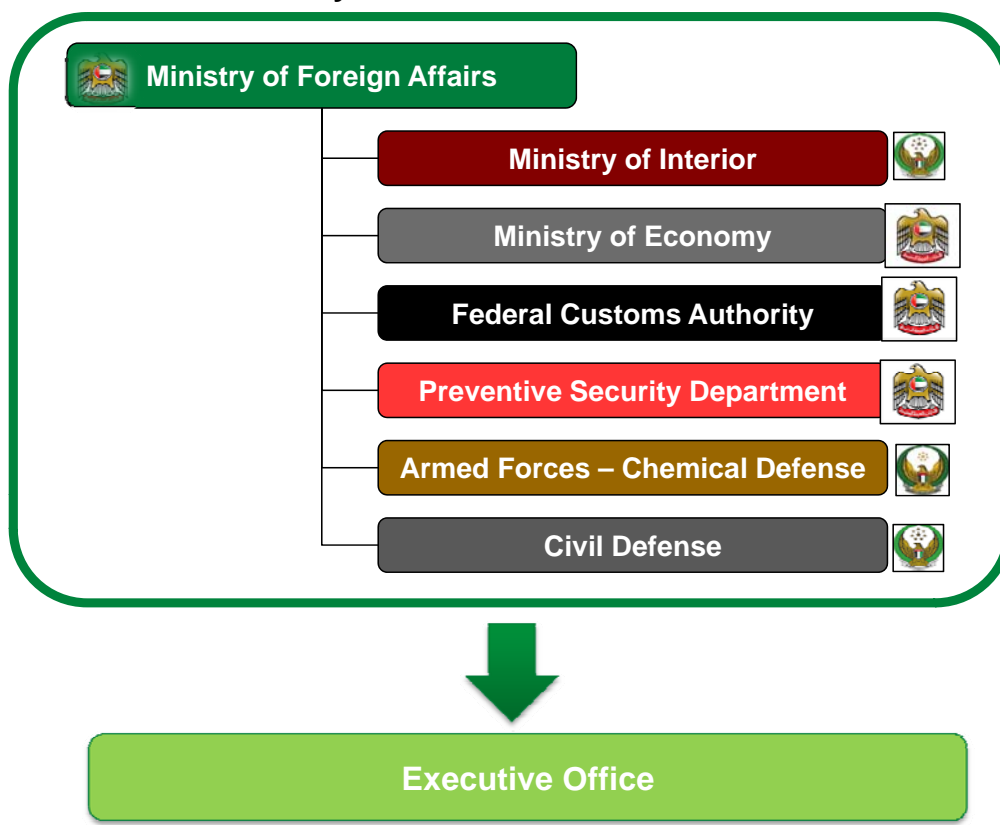
# UAE Import-Export Control Regime

- Imports and Exports of controlled materials are governed by national and international legal frameworks



## The Committee for Goods and Materials Subject to Import and Export Controls

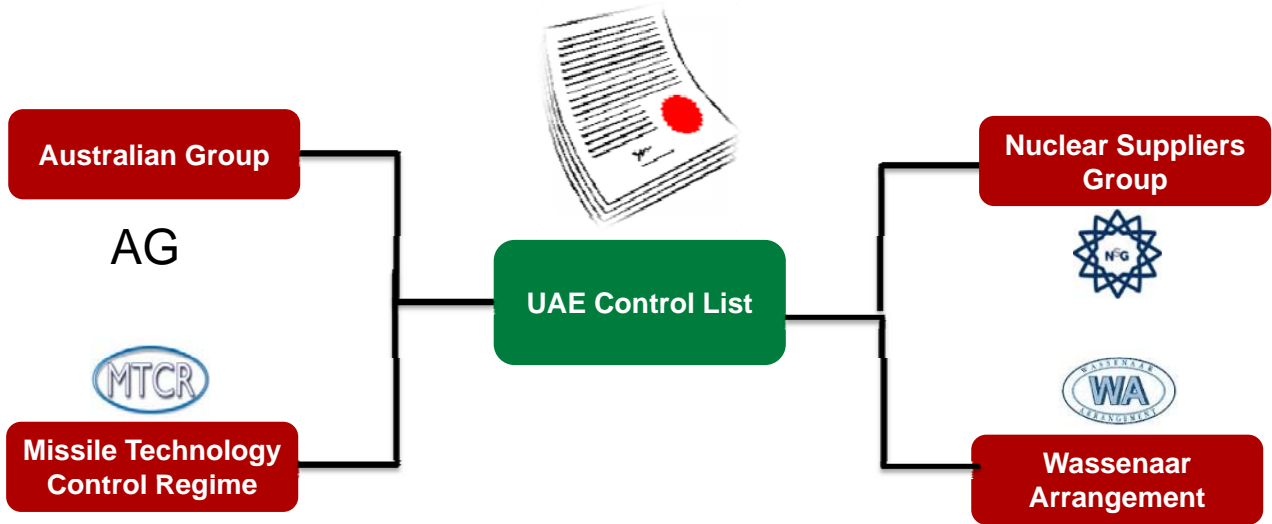
- A National Committee established by the Ministers Cabinet under Decree No. 299/3 of 2009





# UAE Strategic Goods and Materials List

- Developed from UAE laws and regulations, international obligations, and international leading practices



## High Performance Servo Actuators

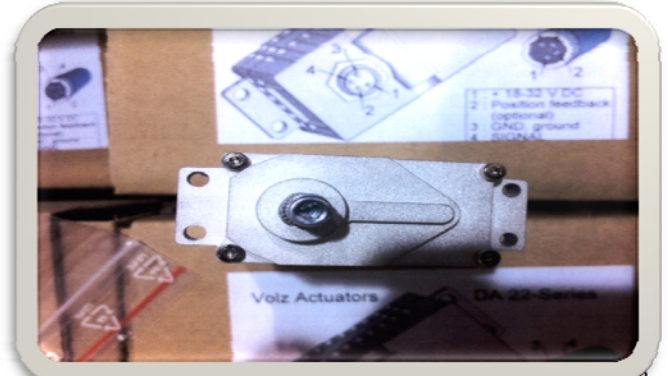
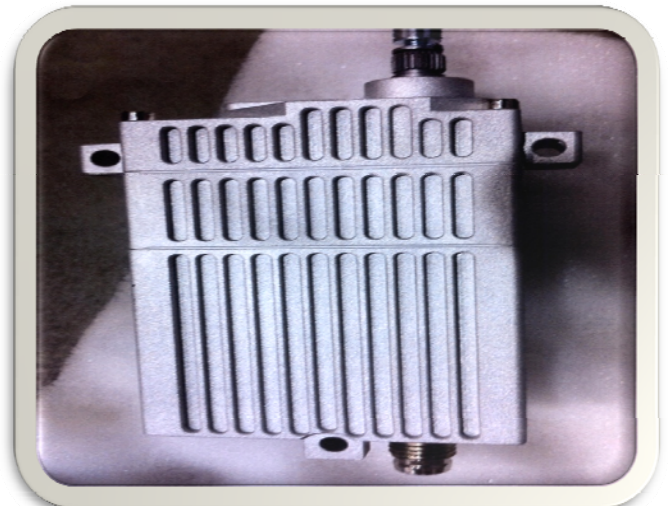


VOLZ produces high performance servo actuators for industrial and aerospace applications, with several COTS solutions and the ability to develop custom solutions.

VOLZ are flying on several global UAV platforms including the Lockheed Martin Fury 1500, Northrop Grumman BAT, AAI Corp Aerusuride Mk4.7, Aerionautics Orbiter, EADS Cassidian DO-DT target drones, and Schiebel Camcopter S-100.

Actuators are available with number of high-end optional features including brushless motors, contactless sensor, position feedback and clutch mechanisms, providing a high-reliability solution. Submersible solutions are also available, proven to 100m/300ft or 10bar/145psi. All hardware has traceability which can be difficult to obtain from high volume hobby RC servos. Volz also has a redundant variant of the DA26 servo available in 2015.

[systemtechnology.com/company/uav-production-tech/uav-servos/](http://systemtechnology.com/company/uav-production-tech/uav-servos/)





# PICO military DC converter Military DC Converters



HiQP series

Miniature DC / DC Converters (DC converter)



3685\_Mini-Circuits\_JTOS-1000W\_01.pdf

1 / 2

## Surface Mount Voltage Controlled Oscillator

## JTOS-1000W+ JTOS-1000W

Wide Band 500 to 1000 MHz

### Features

- wide frequency range, 500 to 1000 MHz typ.
- 3 dB modulation bandwidth 100 kHz typ.
- octave, linear tuning
- low phase noise, -134 dBc/Hz at 1 MHz offset, typ.
- excellent harmonic suppression, -26 dBc typ.
- aqueous washable

### Applications

- test instruments-signal generators
- wideband frequency synthesizers
- agile communications systems
- calv. distribution and set-top converters
- cellular up and down converters
- digital cordless phones



CASE STYLE: BK377

RoHS compliant in accordance with EU Directive (2002/95/EC)

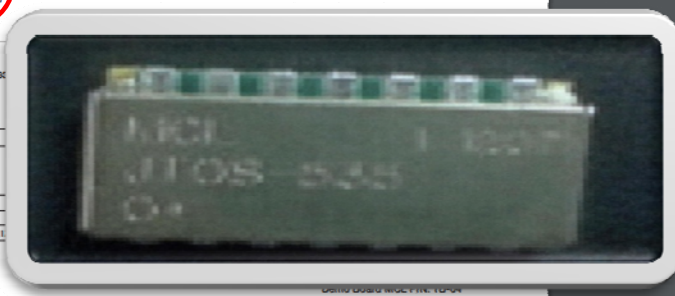
The +Suffix identifies RoHS Compliance. See our web site for RoHS Compliance methodologies and qualifications.

FREQUENCY (MHz)		POWER OUTPUT (dBm)	TUNING VOLTAGE (V)	
Min.	Max.	Typ.	Min.	Max.
500	1000	+7.0	1.0	18

### Pin Connections

RF OUT	
VCC	
V-TUNE	
GROUND	1,3,4,6,7,8,9,10,11,12

### Outline Drawing



Suggested PCB Layout (PL-605)



www.minicircuits.com/pdfs/ZFSC-4-1+.pdf

+.pdf

1 / 1



# Coaxial Power Splitter/Combiner

## 4 Way-0° 50Ω 1 to 1000 MHz

### ZFSC-4-1+



BNC version shown  
CASE STYLE: G15

Connectors	Model	Price	Qty.
BNC	ZFSC-4-1-BNC+	\$89.95	(1-9)
SMA	ZFSC-4-1-S+	\$89.95	(1-9)
	BRACKET (OPTION "B")	\$5.00	(1+)

#### Maximum Ratings

Operating Temperature -55°C to 100°C  
 Storage Temperature -55°C to 100°C  
 Power Input (as a splitter) 1W max.  
 Internal Dissipation 0.250W max.  
 Permanent damage may occur if any of these limits are exceeded.

#### Coaxial Connections

SUM PORT	S
PORT 1	1
PORT 2	2
PORT 3	3
PORT 4	4

#### Features

- wideband, 1 to 1000 MHz
- low insertion loss, 0.6 dB typ.
- good isolation, 23 dB typ.

#### Applications

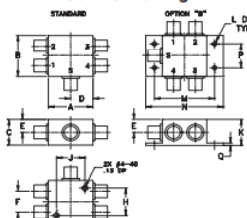
- cellular
- UHF
- ISM
- transmitters/receivers

#### Electrical Specifications

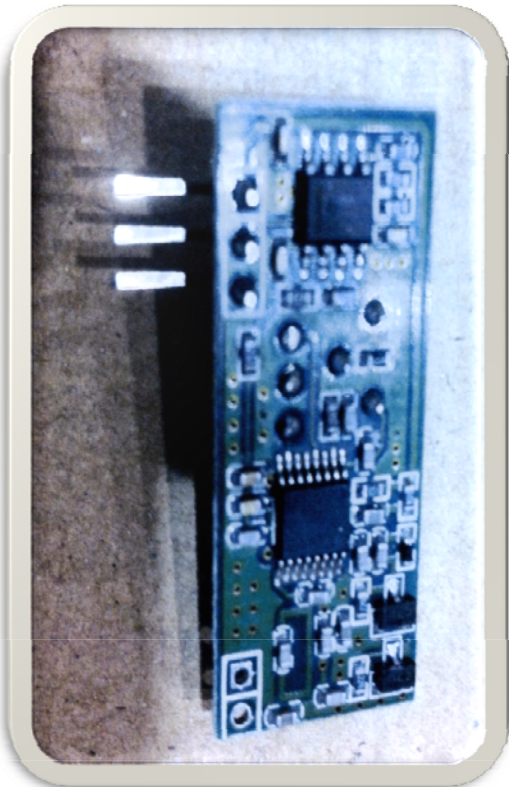
FREQ. RANGE (MHz)	ISOLATION (dB)						INSERTION LOSS (dB) ABOVE 6.0 dB						PHASE UNBALANCE (Degrees)			AMPLITUDE UNBALANCE (dB)		
	L		M		U		L		M		U		L	M	U	L	M	U
	Typ.	Min.	Typ.	Min.	Typ.	Min.	Typ.	Max.	Typ.	Max.	Typ.	Max.	Max.	Max.	Max.	Max.	Max.	Max.
1-1000	25	20	23	18	20	15	0.4	1.0	0.6	1.5	1.6	0.5	4	0	8	0.2	0.4	0.7

L = low range [1 to 10], M = mid range [10 to 100], U = upper range [100 to 1000]

#### Outline Drawing



Outline Dimensions (inch)



**Thanks for listening**

**Saeed Almehrezi**

**Executive Office**

**[almehrezi@uaeiec.gov.ae](mailto:almehrezi@uaeiec.gov.ae)**

**Tel :0097144040040**